

How Colorado's Water Plan and the Basin Implementation Plans
are Really All About Making Stuff Happen

Watershed Health Projects in the Arkansas Basin

Who Can Keep Up?!

Watershed Health

- What is it, according to the plans?
- How do the plans approach it?
 - Colorado Water Plan (CWP)
 - Basin Implementation Plan (BIP)
- Arkansas BIP?
 - Example projects
 - Arkansas River Watershed Collaborative
 - Cucharas Watershed Protection

“Watershed Health”

“I shall not today attempt further to define [what] I understand to be embraced within that shorthand description and perhaps I could never succeed in intelligibly doing so. But *I know it when I see it....*”

Justice Potter Stewart, *Jacobellis v. Ohio* (1964)

2 + 2?



Colorado Water Plan's Watershed Health Projects

- Develop “metrics” to assess watershed health. CWP2, p. 405
- Protect and restore “critical” watersheds through technical and financial support to local stakeholder groups developing watershed “master plans.” CWP2, p. 406



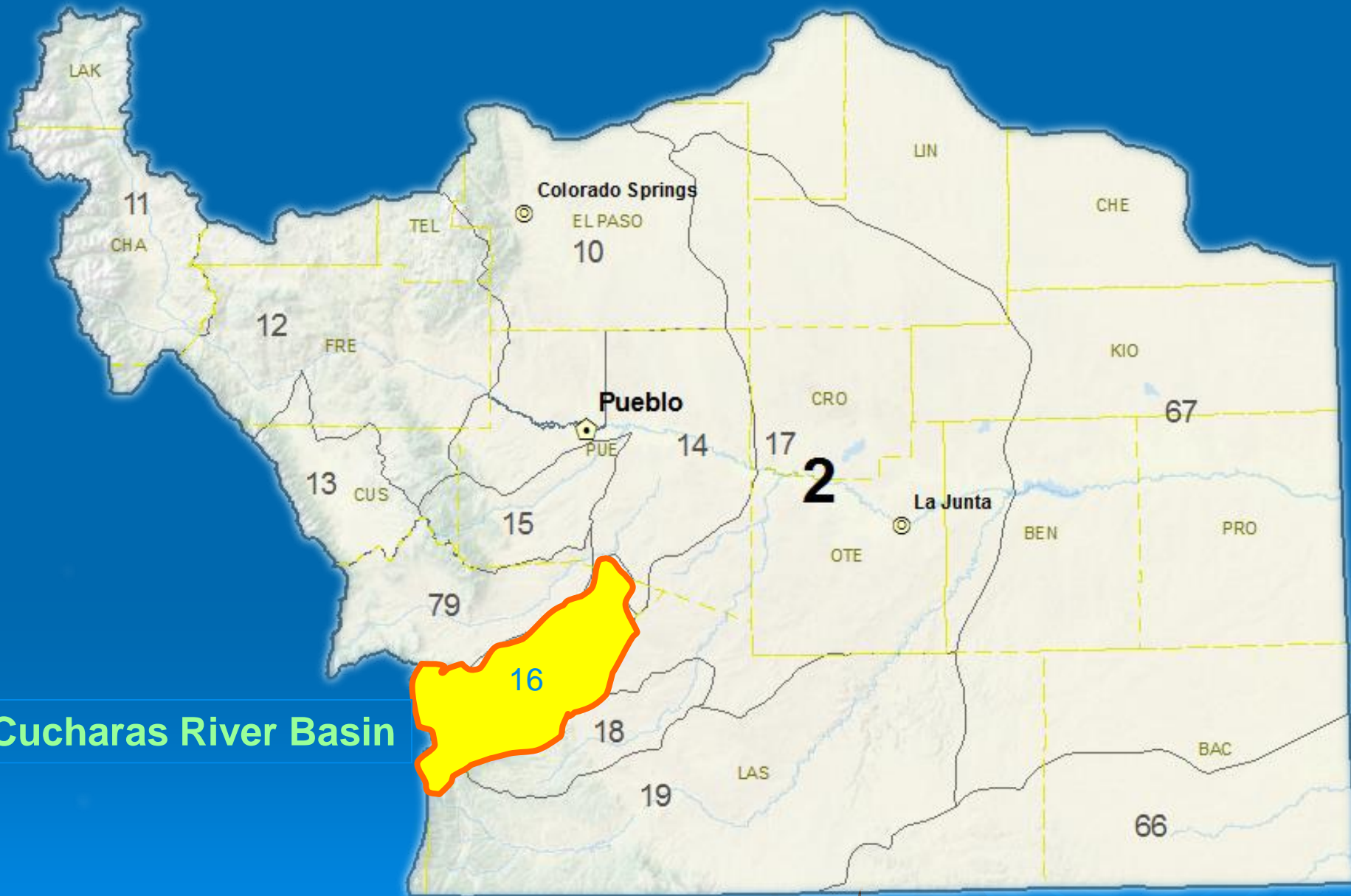
Ark BIP Example

Watershed Health Projects

- Self-identified Watershed Health Projects:
20% of 550 projects in MNL
<http://www.arkansasbasin.com/arkansas-bip.html>
- Examples:
 - Every county: collaborative(s) + plan(s)
 - Phreatophyte control, riparian rehab
 - Seasonal flow management
 - Lake level maintenance + instream flows
 - Forest health, fuels reduction + fire recovery
 - Fish + habitat management
 - Grazing management
 - Watershed assessment
 - Land use integration

Arkansas River Watershed Collaborative

- Watershed Health Subcommittee of Basin RT Exec Cmte Mark Shea CSU
- Anticipated funding c. \$821K all sources
 - \$265K, WSRA (25/240) [LAVWCD, Jay Winner]
- Management: CUSP/COCO [Carol Ekarius]
- Coordinator: **Deb Phenicie** (1 of 3)
- Immediate Projects
 - Purgatoire Watershed Invasive Species Removal and Rangeland Management Improvements
 - Tennessee Creek Fuels Reduction Project: Turquoise Lake
 - Cucharas Watershed Protection

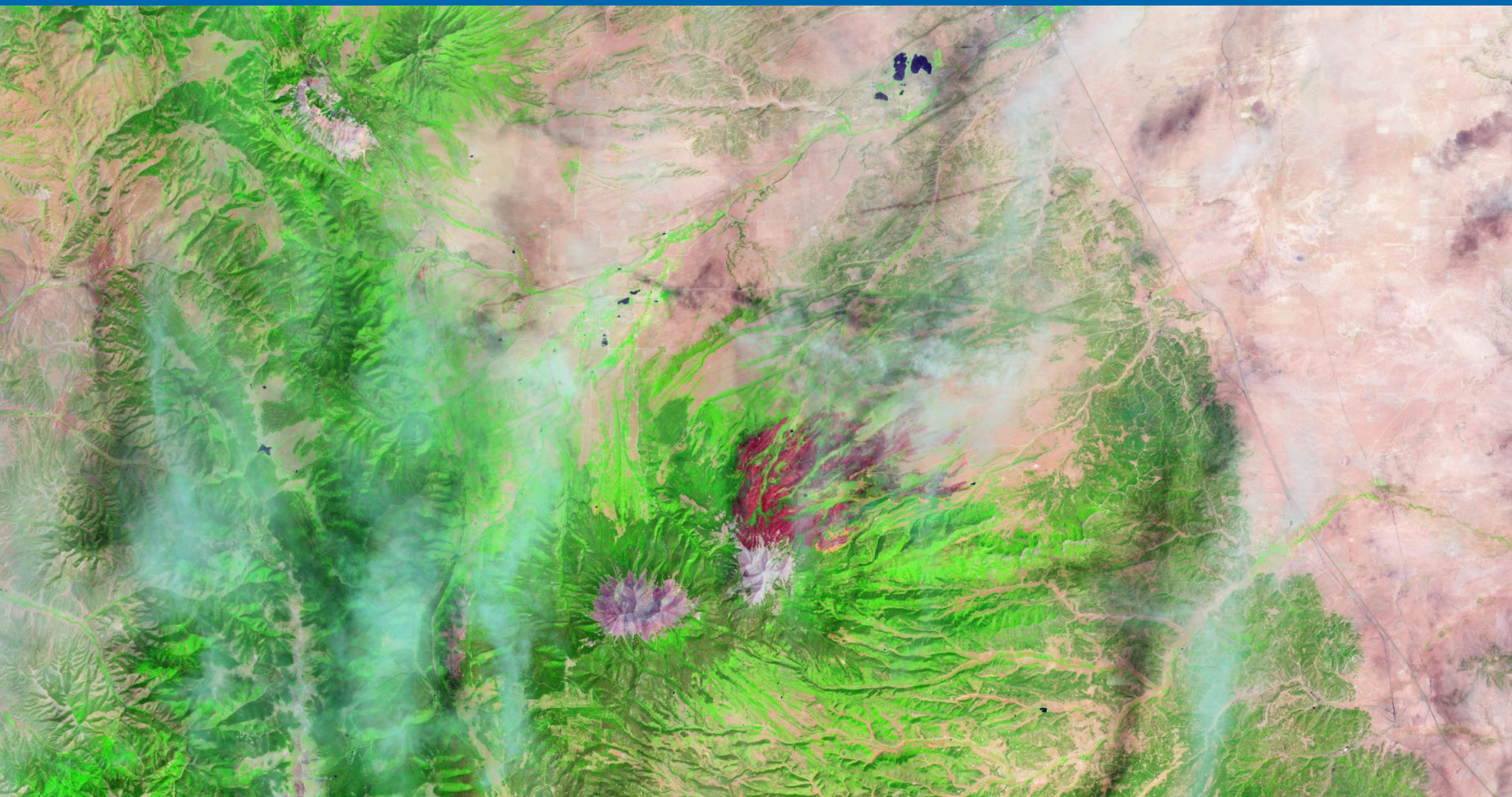


Cucharas River Basin

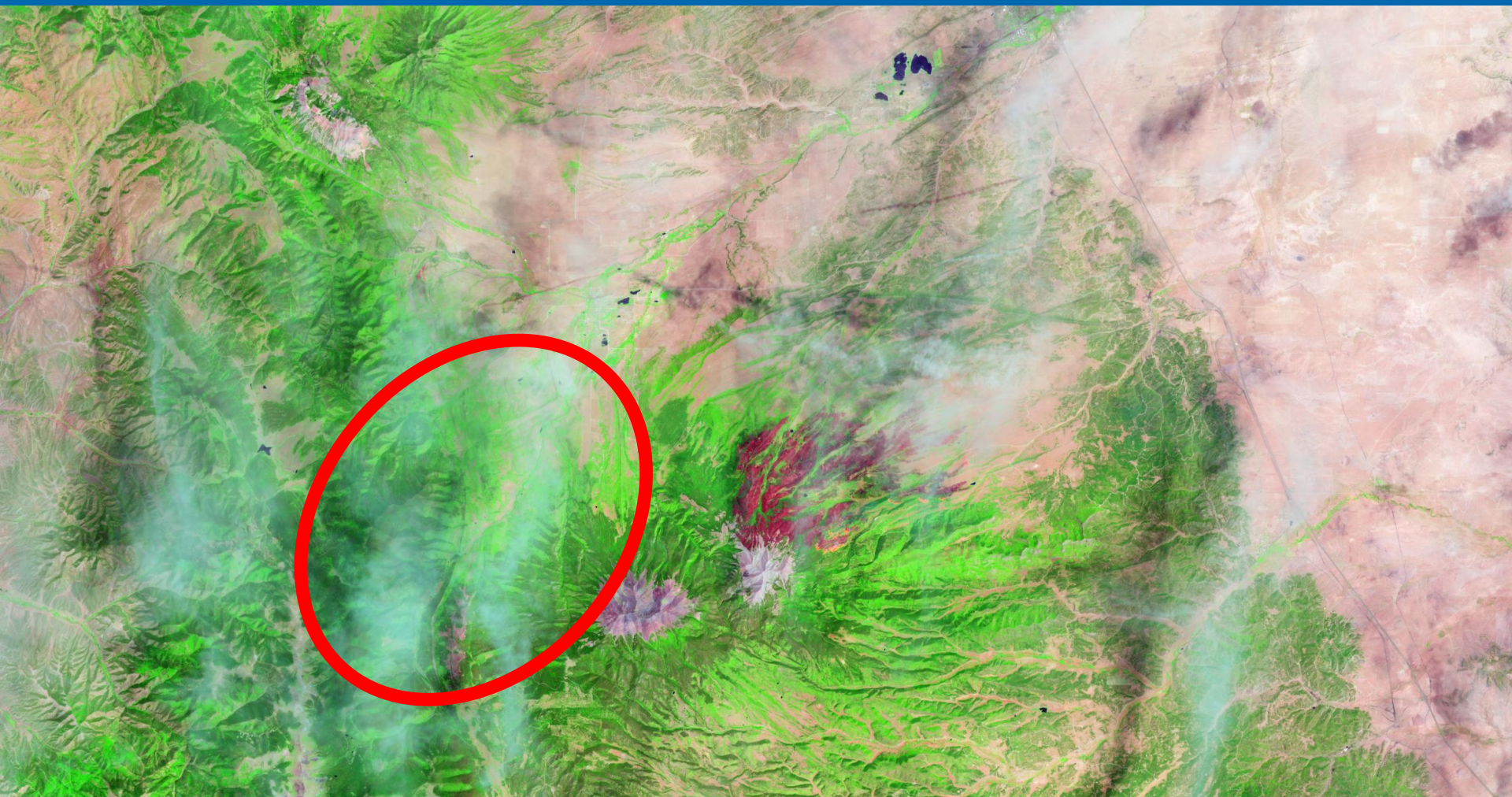
East Peak Fire, 2013



East Peak Fire, 2013



East Peak Fire, 2013



Collaborators

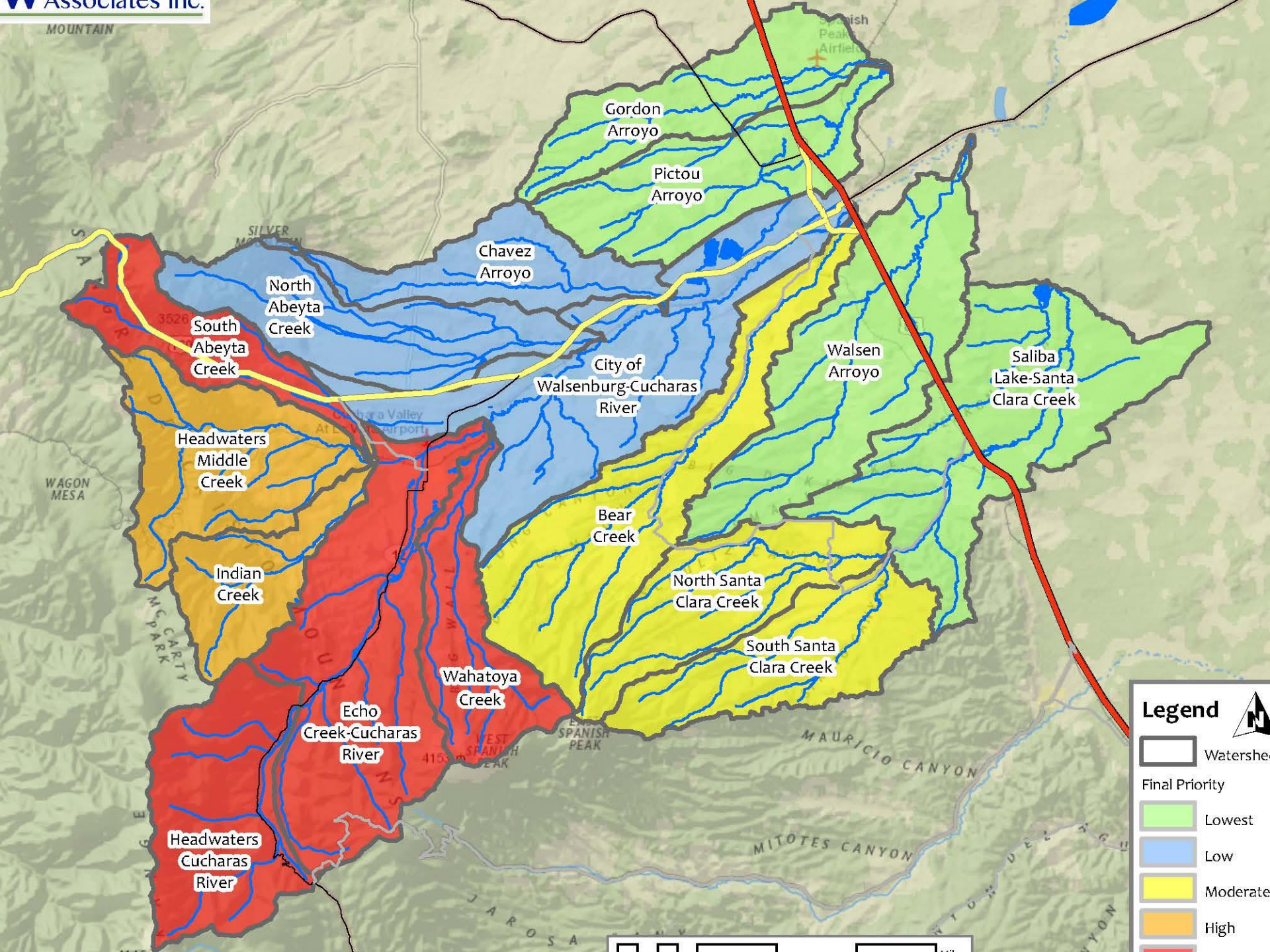
➤ Cash

- HCWCD
- BOCC
- Walsenburg
- La Veta
- CSWD
- LVFPD
- HCFPD
- UHFPD
- CWCB/WRP (45%)






Chris Sturm

➤ In-kind

- CSFS
- CPW
- NRCS
- USFS
- c. 50 local water users



Legend

-  Watershed
- Final Priority**
-  Lowest
-  Low
-  Moderate
-  High
-  Highest



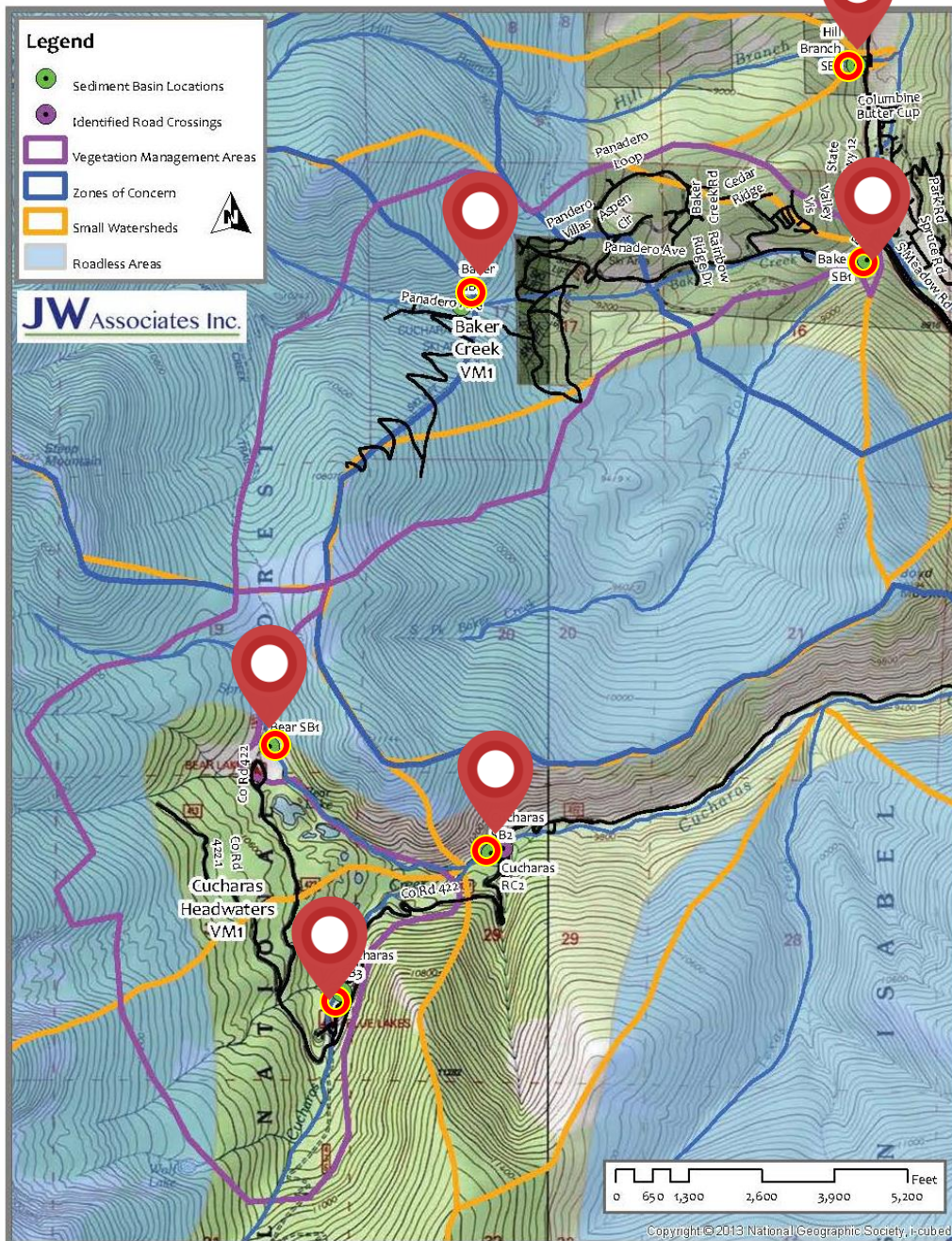


Figure 10. Baker Creek and Cucharas Headwaters 1 Vegetation Management Areas

Projects:
 17 Vegetation Mgt Areas
 4 Stream-road crossings
 32 Sediment basins

32 Sediment Basins

Pre-engineering design

2015

Funding

- BOCC
- HCWCD
- WSRA
 - ARWC
 - ABR
 - CWCB

Funding



Collaborative Myths

- Locals don't know what need be done
 - They have to be told (by experts?)
- Even so, Locals don't know how to do it
 - They have to be told (by experts?)
- “Collaboratives” are necessary for funding.

Collaborative (Partnership) Truths

- No “one size fits all” template
- Consider demographics ...
- Work with what you have
 - It may not include local NGOs
 - It may be limited to
 - Local governments
 - Unorganized stakeholders
- Call it a “collaborative”

Matching Funds?

- People don't mind being asked for money
- Especially if
 - They know the asker
 - There is a demonstrable ROI
 - It is other people's money

De Tocqueville's "Associations"

"Americans of all ages, all conditions, and all dispositions constantly form associations. ... associations of a thousand other kinds, religious, moral, serious, futile, general or restricted, enormous or diminutive. *** **Wherever at the head of some new undertaking you see the government in France, or a man of rank in England, in the United States you will be sure to find an association."**

Democracy in America, Vol II, p. 106 (1840)



Questions

Huerfano County Water Conservancy District

Huerfano River nr Red Wing, Colorado
Looking upstream
River stage - 2.2 feet
06/12/2002